

Convergencias

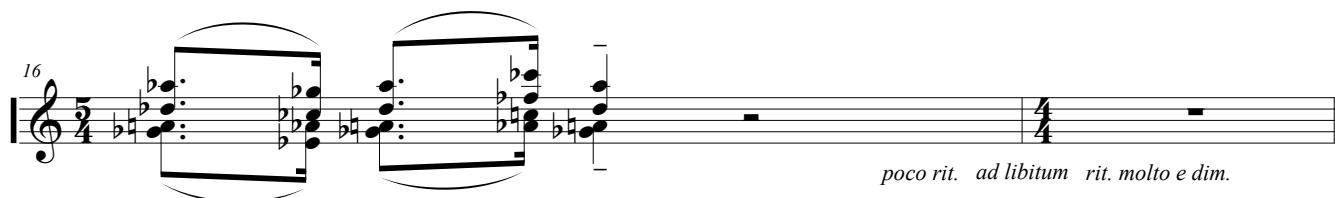
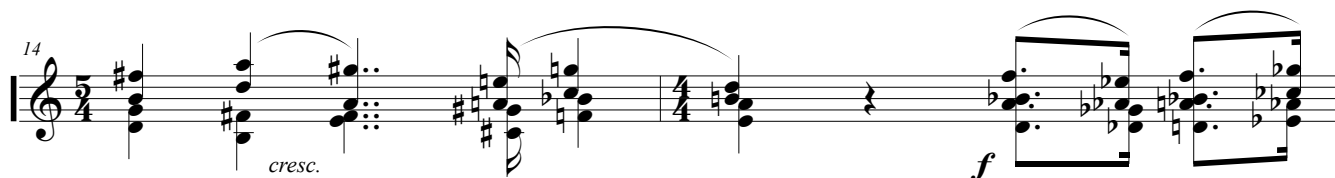
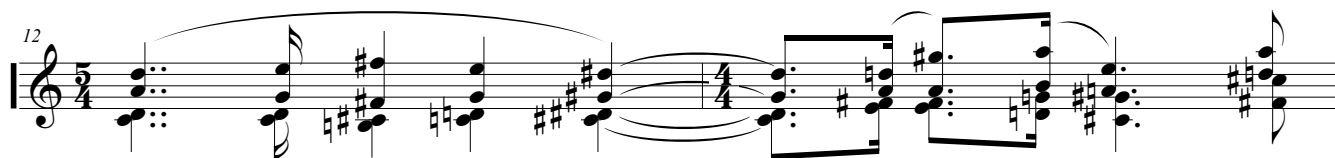
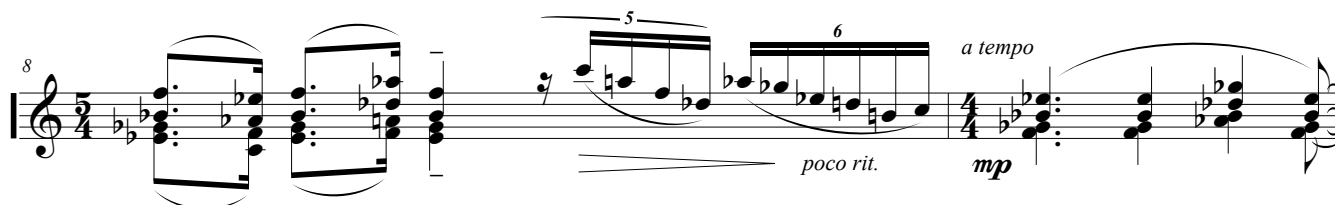
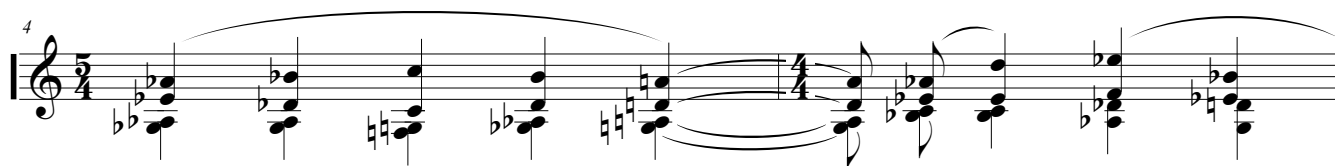
Pablo Beltrán Sobrado

para Carlos Castro

Andante Maestoso ♩ = 72

baquetas medioduras

Vibráfono



Piú mosso expectante ♩ = 66

baquetas blandas

A



20 *Leg.* * *Leg.* * *Leg.* * *Leg.* * *Leg.* * *Leg.* *

23 *Leg.* * *Leg.* * *Leg.* * *Leg.* *

26 *p Leg.* * *Leg.* * *Leg.* * *Leg.* *

28 *mp Leg.* * *Leg.* * *Leg.* * *Leg.* *

30 *Leg.* * *Leg.* * *Leg.* * *Leg.* *

32 *mf Leg.* * *Leg.* * *Leg.* * *Leg.* *

34 *pp Leg.* * *Leg.* * *Leg.* * *Leg.* *

36 *Leg.* * *Leg.* * *mp Leg.* *cresc. poco a poco* * *Leg.* *

38 *Leg.* * *Leg.* * *Leg.* * *mf Leg.* * *Leg.* *

40 *Leg.* * *Leg.* * *Leg.* * *Leg.* *

42 *mp* *Leo.* 5 * *Leo.* 6 * *Leo. cresc.* * *Leo.* *

44 *Leo.* 6 *mf* * *Leo.* 6 * *Leo.* 6 *cresc.* * *Leo.* *

46 *f* *Leo.* 6 * *Leo.* 6 * *Leo.* 6 * *Leo.* 6 * *Leo.* 6 * *Leo.* 7 *

48 **Meno tempo** ♩ = 60 *ff* * *Leo.* * *Leo.* * *Leo.* * *Leo.* * *Leo.* *

49 *mf* *Leo.* * *Leo.* * *Leo.* * *Leo.* * *Leo.* * *Leo.* *

50 *meno tempo* *cresc.* *f* *

B **Adagio ma non troppo** ♩ = 52 *contemplativo*
mp *medium motor*
 baquetas medioduras

56 *a tempo*

58 *mp*

60 *poco rit.*

62 *a tempo*

mp x, death stroke (amortiguado)
motor off

63 *mf* *Reo.*

mf *Reo.* *

64 *a tempo* *mf*

a tempo *mf* *

65 *f* *Reo.* *poco rit.*

f *Reo.* *poco rit.* *

66 *f* *rubato e ad libitum ma con misura* *Reo.*

f *rubato e ad libitum ma con misura* *Reo.* *

68 *p* *Reo.*

p *Reo.* *

70 *medium motor* *mp* *mf* *f*

medium motor *mp* *mf* *f*

72 *a tempo* *mp* *Reo.* *mf* *poco rit.*

a tempo *mp* *Reo.* *mf* *poco rit.* *

73 *ff* *Reo.* *rit.*

ff *Reo.* *rit.* *

74 *a tempo più mosso* *mf* *baquetas medioduras* *motor off* x, death stroke (amortiguado)

a tempo più mosso *mf* *baquetas medioduras*
motor off x, death stroke (amortiguado)

75 *f* *mp* *Adagio* ♩ = 42

76 *dim.* *pp* *rit.*

78 *Grave* ♩ = 38
medium motor
mp *con arco* *poco rit.*

80 *Adagio ma non troppo* ♩ = 52
motor off *mf* *baquetas medioduras*

82 *tres tiempos de negra aprox.* *Lea.*

84 *accel. e cresc.* *f* *rit.* *Lea.*

86 *dos tiempos aprox. con arco* *baquetas blandas* *a tempo* *poco rit.*
mf *medium motor* *mp* *mf* *pp*

D *Più mosso expectante* ♩ = 66
p *baquetas blandas* *motor off* *Lea.*

90 *Lea.* ** Lea.* ** Lea.* ** Lea.* ** Lea.* ** Lea.* ** Lea.*

93 *Lea.* ** Lea.* ** Lea.* ** Lea.* ** Lea.* ** Lea.* ** Lea.*

96 *p* *Leo.* * *Leo.* * *Leo.* * *Leo.* *

98 *mp* *Leo.* * *Leo.* * *Leo.* * *Leo.* *

100 *Leo.* * *Leo.* * *Leo.* * *Leo.* *

102 *mf* *Leo.* * *Leo.* * *Leo.* * *Leo.* 6 *

104 *pp* *Leo.* * *Leo.* * *Leo.* * *Leo.* *

106 *Leo.* 6 * *Leo.* * *Leo.* *mp* 6 *cresc. poco a poco* * *Leo.* 6 *

108 *Leo.* 5 * *Leo.* * *Leo.* *mf* 6 * *Leo.* *

110 *Leo.* 6 * *Leo.* * *Leo.* 6 * *Leo.* 5 * *Leo.* *

112 *Leo.* *mp* 5 * *Leo.* * *Leo.* *cresc.* 6 * *Leo.* *

114 *Leo.* 6 *mf* * *Leo.* * *Leo.* *cresc.* * *Leo.* *

116 *f* *Lea.* * *Lea.* * *Lea.* * *Lea.* * *Lea.* * *Lea.* *

meno mosso ♩ = 60

118 *ff* *Lea.* 3 * *Lea.* 3 * *Lea.* 3 * *Lea.* 3 *

119 *precipitato* 7 *stirando* 9 *mf*

E *Adagio* ♩ = 46
slow motor

pp *preciso* *Lea.* * *Lea.* * *Lea.* * *Lea.* *

121 *mp* *Lea.* * *Lea.* * *Lea.* * *Lea.* *

122 *mf* *Lea.* * *Lea.* * *Lea.* * *Lea.* *

123 *motor off marcato* *Lea.* * *Lea.* * *Lea.* * *Lea.* *

124 *f* *Lea.* * *Lea.* * *Lea.* * *Lea.* * *Lea.* * *Lea.* * *Lea.* *

125 *a tempo* 3 *rubato* *rit.* *sfz* *

F *Andante Maestoso* ♩ = 66
motor off baquetas medioduras

mp *espressivo*

128

Staff 128-129: Treble clef, 4/4 time. Measures 128-129. Key signature: two flats. Dynamics: *mp*. Phrasing: slur over measures 128-129.

130

Staff 130-131: Treble clef, 4/4 time. Measures 130-131. Key signature: two flats. Dynamics: *mp*. Phrasing: slur over measures 130-131. *cresc.* marking above measure 131.

132

Staff 132-133: Treble clef, 4/4 time. Measures 132-133. Key signature: two flats. Dynamics: *f*. Phrasing: slur over measures 132-133. *poco rit.* marking below measure 133. Fingerings 5 and 6 indicated above measure 133.

134

Staff 134-135: Treble clef, 4/4 time. Measures 134-135. Key signature: two flats. Dynamics: *mp*. *a tempo* marking above measure 134. Phrasing: slur over measures 134-135.

136

Staff 136-137: Treble clef, 4/4 time. Measures 136-137. Key signature: two flats. Dynamics: *mp*. Phrasing: slur over measures 136-137.

138

Staff 138-139: Treble clef, 4/4 time. Measures 138-139. Key signature: two flats. Dynamics: *mp*. Phrasing: slur over measures 138-139. *cresc.* marking above measure 139.

140

Staff 140-141: Treble clef, 4/4 time. Measures 140-141. Key signature: two flats. Dynamics: *f*. Phrasing: slur over measures 140-141.

G Andante ma tranquillo ♩ = 60

142

Staff 142-143: Treble clef, 4/4 time. Measures 142-143. Key signature: two flats. Dynamics: *p*. *espressivo* marking below measure 142. Phrasing: slur over measures 142-143.

144

Staff 144-145: Treble clef, 4/4 time. Measures 144-145. Key signature: two flats. Dynamics: *mp*. Phrasing: slur over measures 144-145.

146

Staff 146-147: Treble clef, 4/4 time. Measures 146-147. Key signature: two flats. Dynamics: *mf*. *marcato* marking above measure 146. Phrasing: slur over measures 146-147. *Red. cresc.* marking below measure 147. *** marking at the end of the staff.

147 *Red.* * *Red.* * *Red.* * *Red.* *

148 *f*

149 *a tempo*
poco rit.

151 *f* *leggero*
Red. * *Red.* * *Red.* * *Red.* *

152 *ff* *energico*
Adagio ♩ = 40
con tenerezza e rassegnazione
poco rit. *sfz*

153 *p*
Red. * *Red.* *

154 *Red.* * *Red.* *

155 *Red.* * *Red.* * *poco rit.* *

156 *Red.* * *rit.* *perdendosi*

157 *ppp* * *P. B. S.*